

# PROJECT DATA OVERALL

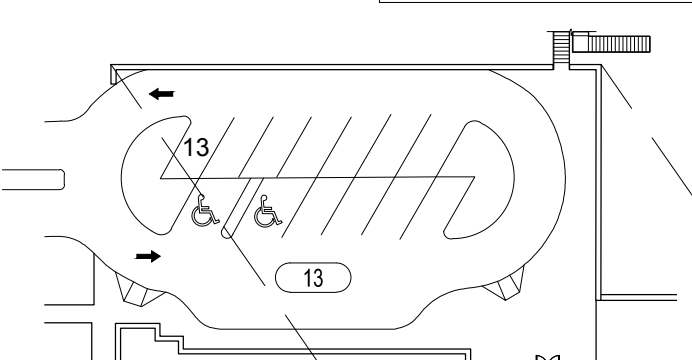
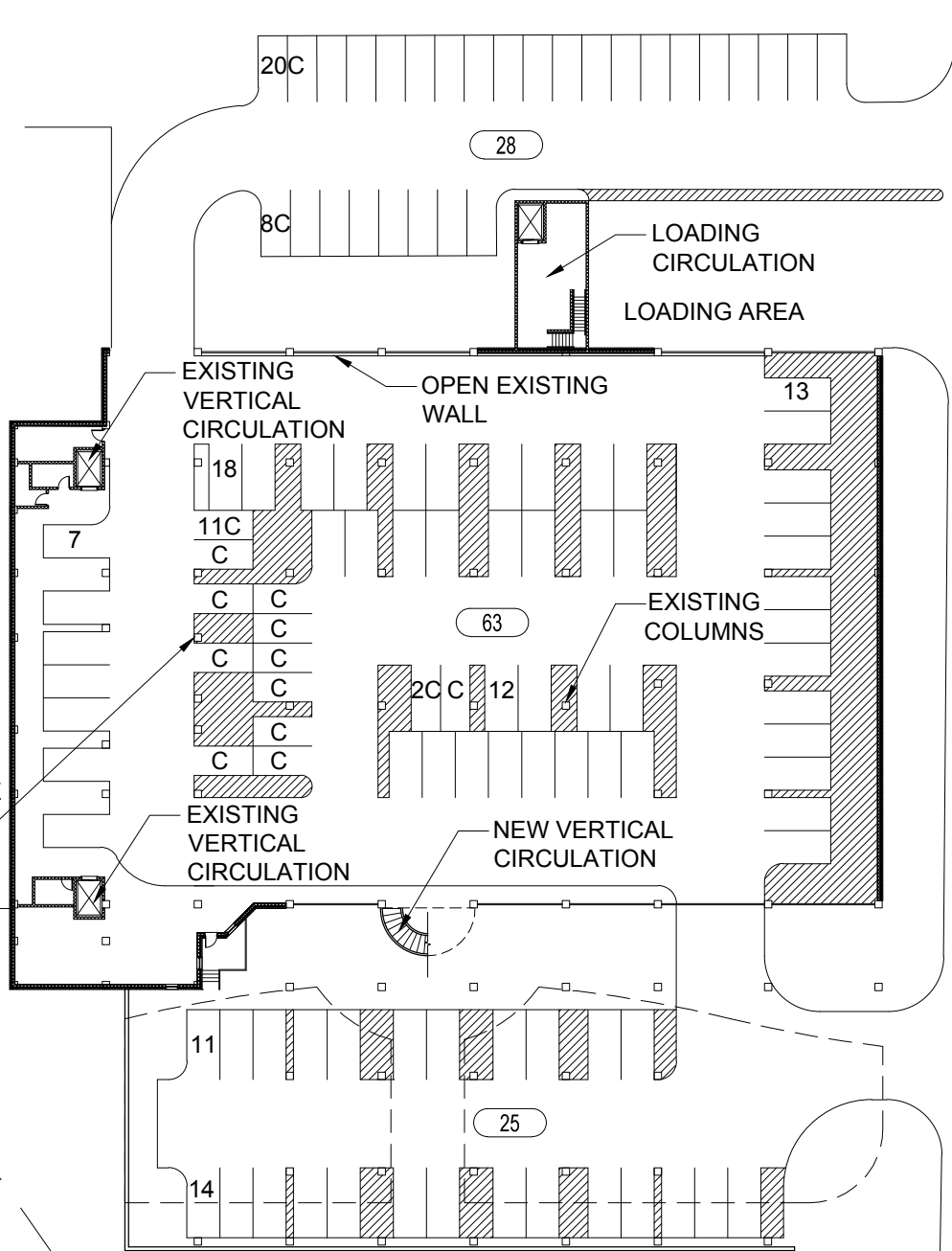
## RETAIL BUILDINGS

OFFICE	20,310 SF
- EXISTING	44,880 SF
RESTAURANTS	9,550 SF
SHOPS	9,800 SF
<b>TOTAL PROJECT AREA</b>	<b>84,540 SF</b>

## RETAIL PARKING

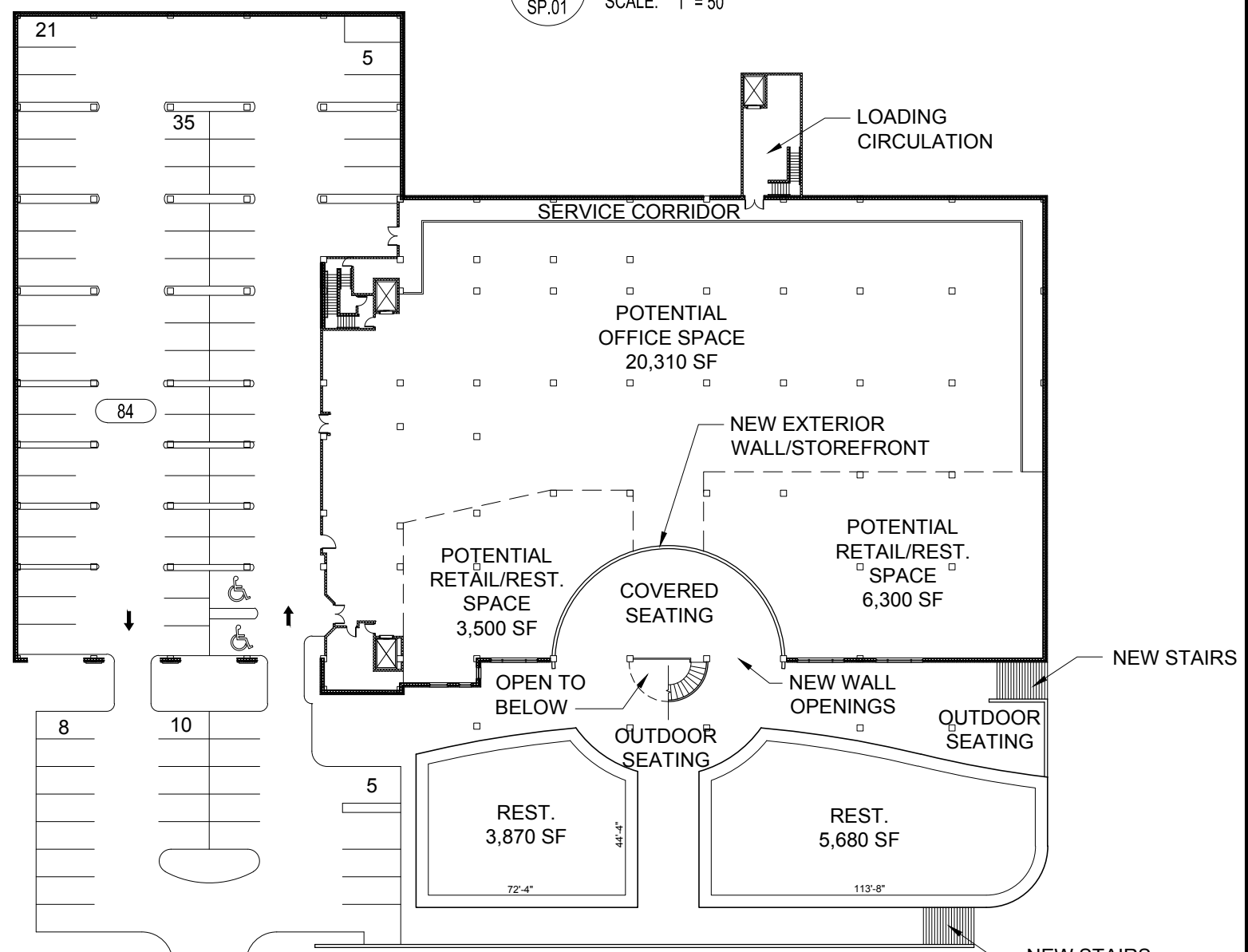
OFFICE PARKING REQ'D (2.22/1000SF)	100 SPACES
REST. PARKING REQ'D (10.0/1000 SF)	96 SPACES
SHOPS PARKING REQ'D (3.33/1000 SF)	33 SPACES
<b>TOTAL PARKING REQUIRED</b>	<b>233 SPACES</b>
- ON-STREET CREDIT (-16 SPACES)	213 SPACES
<b>TOTAL PARKING PROVIDED</b>	<b>213 SPACES</b>
<b>PARKING RATIO PROVIDED</b>	<b>2.41/1,000 SF</b>

OPTION TO REMOVE COLUMN AND INCREASE PARKING COUNT

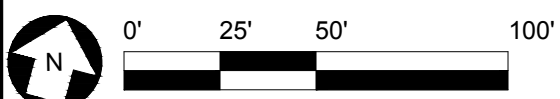


3 **FIRST LEVEL**  
SCALE: 1" = 50'

1 **GROUND LEVEL**  
SCALE: 1" = 50'



2 **METRO LEVEL**  
SCALE: 1" = 50'



CLIENT	PROJECT ONE PRESS PLACE	JOB NUMBER 1450901	BY MLH
	LOCATION ATHENS, GA	DATE 08.06.14	DRAWING SP.01

